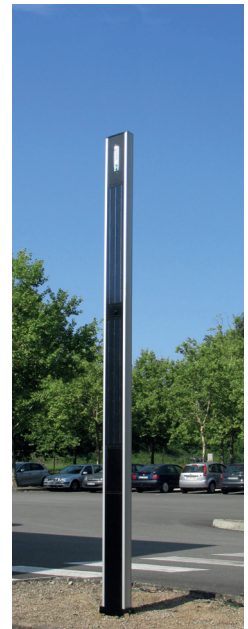
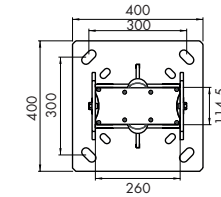
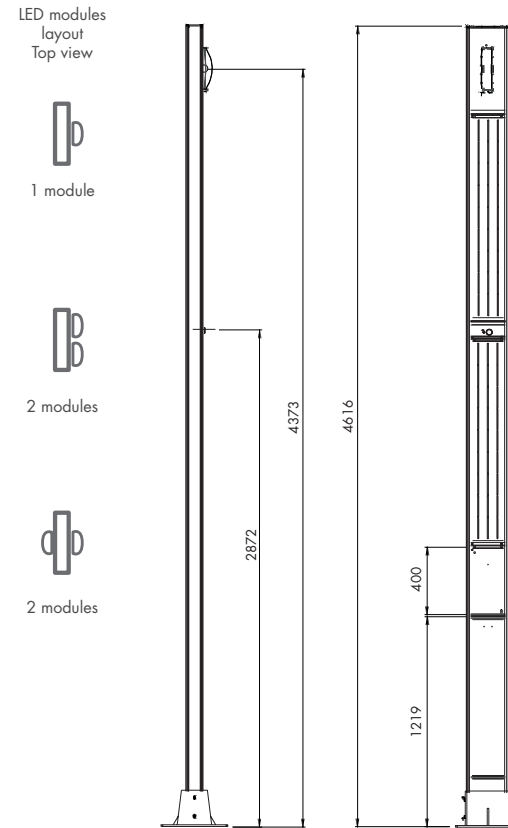


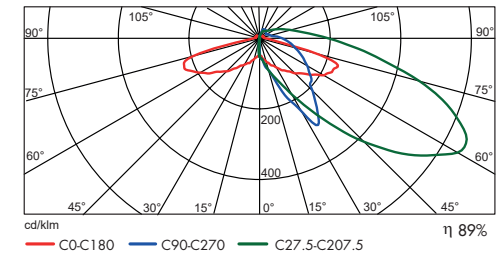


OVERALL INFORMATION	
Dimensions	H 4600 x W 250 x D 110
Luminaire weight without batteries	95 kg
Material and paint treatment	Aluminum pole - Powder paint (seafront and seaside on request)
Max Power	38W for 1 module
Nominal power	20W for 1 module
Indication for the implementation of a surge arrester	Category Electronic Equipment > IV
LED	
Lifetime	L80 > 100 000 hours @700mA@Tj=85°C
Manufacturer	LUMILEDS
Lumen/Watt efficiency	152 lm/W max. @350mA @Tj = 85°C - Bin V @4000K
Color T°:	3000K and 4000K - CRI 70
LIGHTING	
Outgoing nominal flow	2173 lm@4000K for 1 module
Optical performance	89%
Luminaire nominal efficiency	109 lm/W @4000K
Optics	ASYM 2.1 pathway type as standard, ASYM 3.3 optional
BATTERY	
Battery weight	3 x 3.5Kg
Technology	LiFePo4
Total power	960Wh
Voltage / Capacity	3 x 3.2V/100Ah
Nominal lifetime	5 years
PHOTOVOLTAIC PANELS	
Number of panels - Technology	4 - Monocrystalline
Unit power	35W
Voltage	13,6V
IK panels	IK08
PROGRAMMING	
Programming	Standard 20W/10W with detector, other on-demand programming at the factory
<b>Smart Dimming function</b> <b>Smart Lum functions</b>	<b>Lighting automatic dimming according to the charge of the battery</b> <b>Detect, P-Adjust and Cycles</b>
ELECTRONIC CARD	
Battery Management (BMS)	Yes
Solar Charger	Yes
Communication	WIFI and ZIGBEE
Date and time setting	by GPS
Movement detector	High-frequency, detection up to 10m



### Photometric curves

ASYM 2-1 optics



COMPLIANCE	
Standards and certifications	EN 60598-1 / 2-3 Lighting: General requirements and tests - Public lighting luminaires EN 62722-2-1 Performance of luminaires: Requirements for LED luminaires UTE C15-712-2 Practical guide - Stand-alone photovoltaic installations not connected to the public distribution network with battery storage EN 40-6 Specification for aluminum public lighting candelabra
OPERATING TEMPERATURE	
	Operating temperature range: -20°C to 60°C Nominal temperature range: 0° to 45°C Outside these ranges, the batteries must be buried.
INSTALLATION	
Installation mean	Sealing rods provided, specific according to the wind area
Battery location	See installation instructions Inside the pole as standard, buried according to the temperature of use
AUTONOMY	
	According to location and orientation of the luminaire - See table of use